

**SPEED** | **BLOCK™**

# THE RED FLAGS STOP HERE



**Multipurpose  
Speed-I-Blocks  
provide six functions  
with absolute  
engineered  
value ratings.**

- Increase concentrated point load—like a squash block
- Improve lateral shear
- Enhance connectivity to plate and building assembly
- Web stiffener
- Frame for Insul-Panel
- Nailing platform for sub-fascia

**PACIFIC**  
**WOODTECH**  
CORPORATION

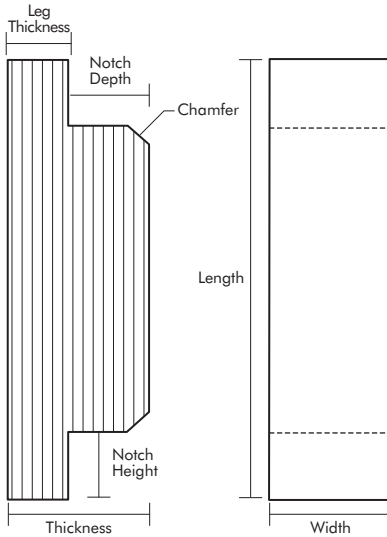
Use of Patents Pending and brand name has been granted to Pacific Woodtech Corporation during the test market phase by:  
SILPRO, LLC, 1277 E Rivers End Dr, Eagle, Idaho 83616

# SPEED - I - BLOCK \*

SPEED-I-BLOCKS are precision prefabricated multipurpose support blocks designed and engineered for multifunctional use with wood I-joists. When properly installed, Speed-I-Blocks work as a combination squash block and web stiffener, transferring vertical load around the wood I-joists.

**\*U.S. and Foreign Patents Pending**

VERTICAL LOAD CAPACITY				
Bearing Width (in)	2.25	3.5	4.25	5.5
Capacity (lbs)	962	1496	1817	2351
<b>Notes:</b>				
1) Given capacities are for <b>two blocks that must be used in pairs.</b>				
2) Blocks may overhang wall plate, but capacity is based on the actual supported width.				



**Notes:**

- 1) Thickness = 1.75"                      3) Chamfer = 1/4" x 1/4"                      5) Notch depth = 1"
- 2) Notch height = 1 1/16"              4) Length = Joist height + 1/16"

BLOCK DIMENSIONS			
Name	Joist Series	Joist Height	Width (in)
Speed-I-Block 095	20, 30, 40, 50, 60, 70, 77	9.5	3.5
Speed-I-Block 118	20, 30, 40, 50, 60, 70, 77	11.875	3.5
Speed-I-Block 140	20, 30, 40, 50, 60, 70, 77	14	3.5

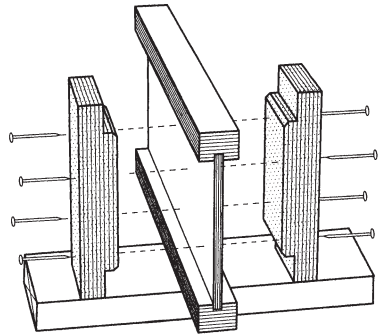
## INSTALLATION NOTES

1. Select the appropriate Speed-I-Block that corresponds with the specified I-joist's series and height.
2. Speed-I-Blocks **must be used in pairs on both sides of the I-joist**.
3. Blocks must be attached flush with the **bottom** of the I-joist **after** the joist is set and **before** sheathing is applied to the floor framing.
4. To ensure load transfer as a web stiffener, the Speed-I-Block should be fastened with four- 3.5" x 0.131" nails, starting 2 inches in from the top and bottom of the block's notch, then evenly spaced in a staggered pattern. **Do not nail blocks through the I-joist flange**. See the I-joist's manufacturer's installation guide for further details.

## DETAILS FOR SPEED-I-BLOCK

### DETAIL 1

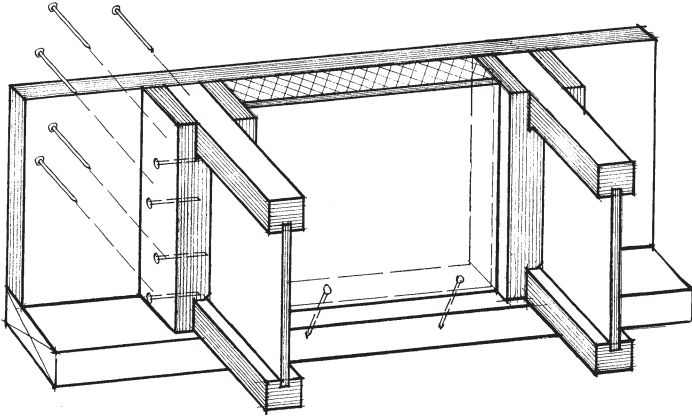
Use 3.5" x 0.131" nails through web (not flange). Optional 8d nails run through floor sheathing to T.O. block. Optional 8d toe-nail block to plate.



# DETAILS (CONTINUED)

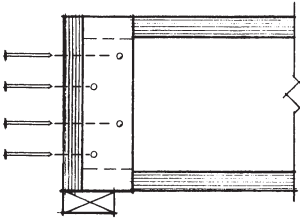
## DETAIL 2

8d nails run through rim board into side of Speed-I-Block. Perimeter-insulated blocking to be positioned inside rim board.



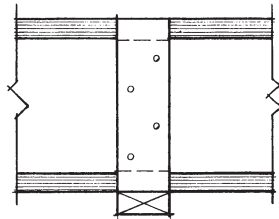
## DETAIL 3

2x4 plate at rim board with partial (2¼") bearing.



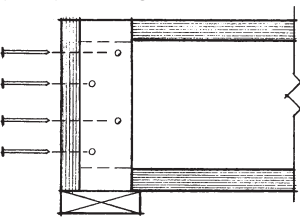
## DETAIL 4

2x4 plate at mid span.



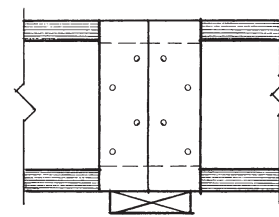
## DETAIL 5

2x6 plate at rim board with full (3½") bearing.



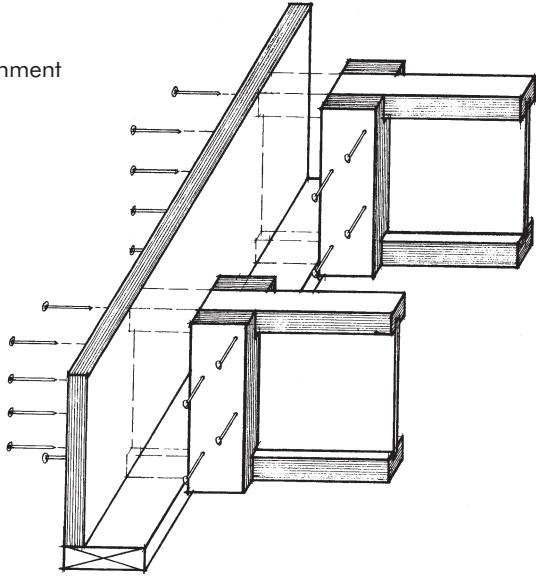
## DETAIL 6

2x4 plate at mid span with two Block-I-Joists.



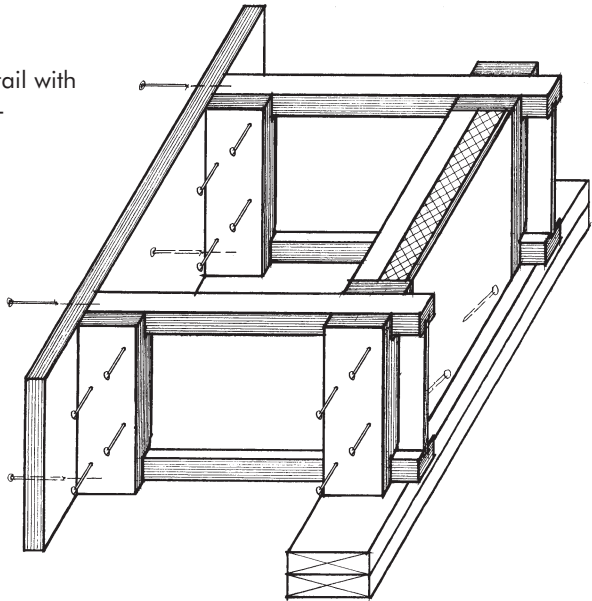
## DETAIL 7

Typical rim board attachment



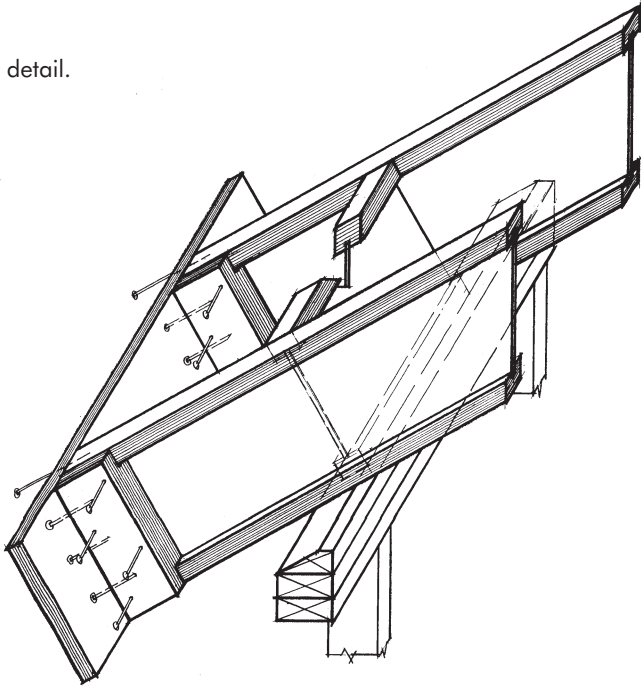
## DETAIL 8

Typical cantilever detail with I-joist and perimeter-insulated blocking.



**DETAIL 9**

Typical rafter detail.



mailing: PO Box 465 Burlington, Washington 98233  
shipping: 1850 Park Lane Burlington, Washington 98233  
toll free: 888-707-2285 tel: 360-707-2200 fax: 360-707-2211  
web: [www.pacificwoodtech.com](http://www.pacificwoodtech.com)

06-0510